



# Swisspearl® Program and colors

Unlimited design solutions

# Competence, Excellence and Innovation

## Long term experience

For almost 40 years, Swisspearl®'s Research & Development teams have continuously expanded their unique expertise regarding fiber cement material technology, coloration and application of whole systems. These significant technological advances are the backbone of the Swiss quality. Swisspearl® is the only manufacturer which masters the highly demanding production processes for integrally colored fiber cement panels offered in such a wide color variety.

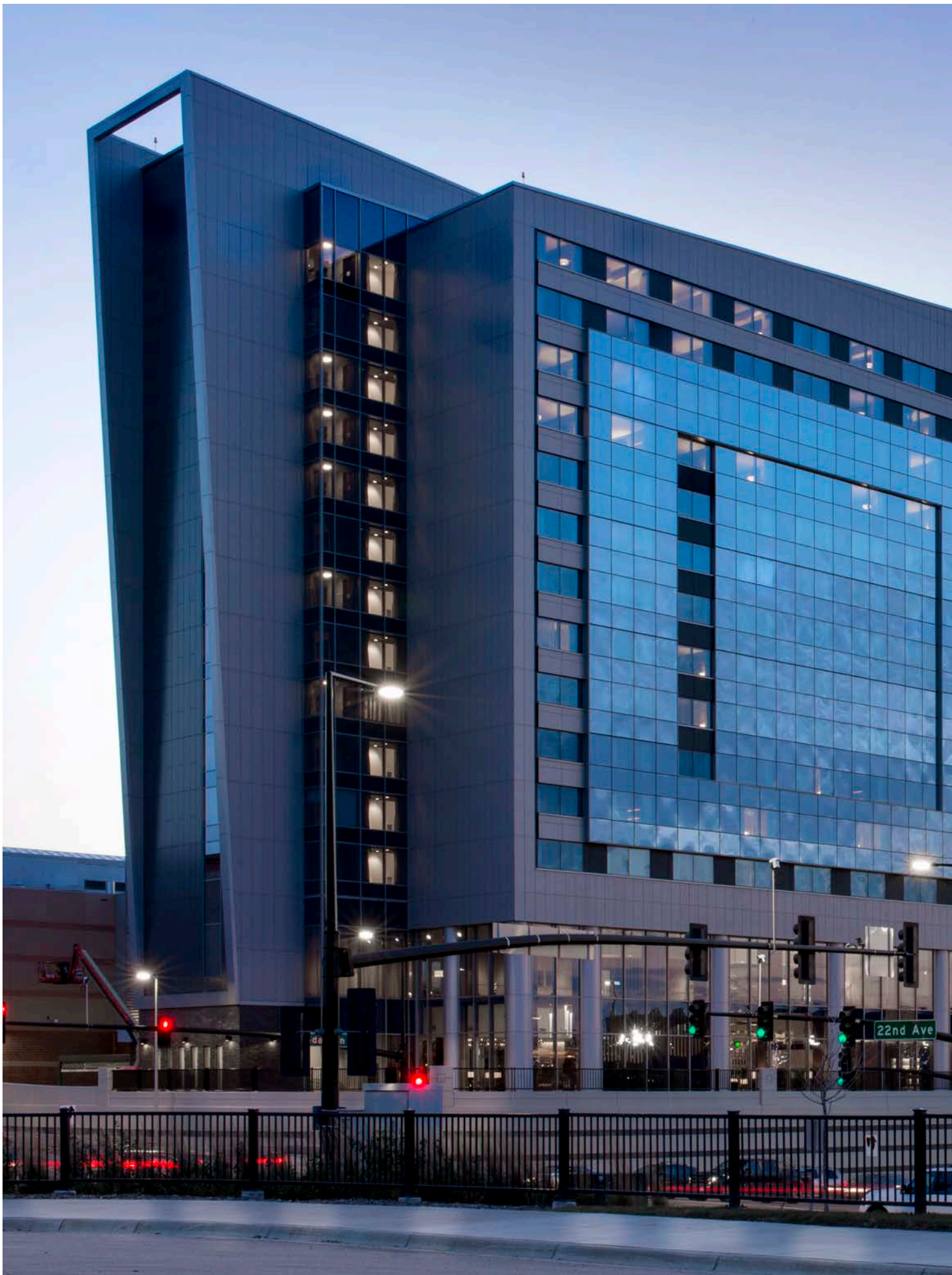
## Unique with long time proven quality

Swisspearl® fiber cement panels are manufactured with low energy and high environment consciousness. Thus the products are 100% environmentally friendly. Additionally, they are mainly made of local mineral raw materials. The proprietary processes pioneered by Swisspearl® with special surface finish, sealed edges and back coating ensure optimal behaviour and durability of the panels, which have been proven over 50 years. Furthermore, Swiss construction authorities testify to over forty years as standard life expectancy. Millions of panels installed throughout the world prove the outstanding, reliable long term quality of the fiber cement panels and coating.

## Contents

Panels	Façade	SWISSPEARL	8
		LINEARIS	10
		MODULA	12
	<hr/>		
	Interior	SWISSPEARL INTERIOR	18
	<hr/>		
	Customized panels	PERFORATIONS	24
		ENGRAVINGS	26
		PANELS COATED ON BOTH SIDES	28
		SUN SHADING ELEMENTS	29
<hr/>			
Roof	SWISSPEARL THE 5 <sup>th</sup> FAÇADE	34	
<hr/>			
Colors	Façade and Interior design	CARAT	40
		AVERA	42
		REFLEX	43
		NOBILIS	44
		PLANEA	45
		CUSTOMIZED COLORS	46
		CUSTOM-TAILORED BUILDING ENVELOPES	47
	<hr/>		
	Roof	CARAT R-COLOR	48
	<hr/>		
General information			49







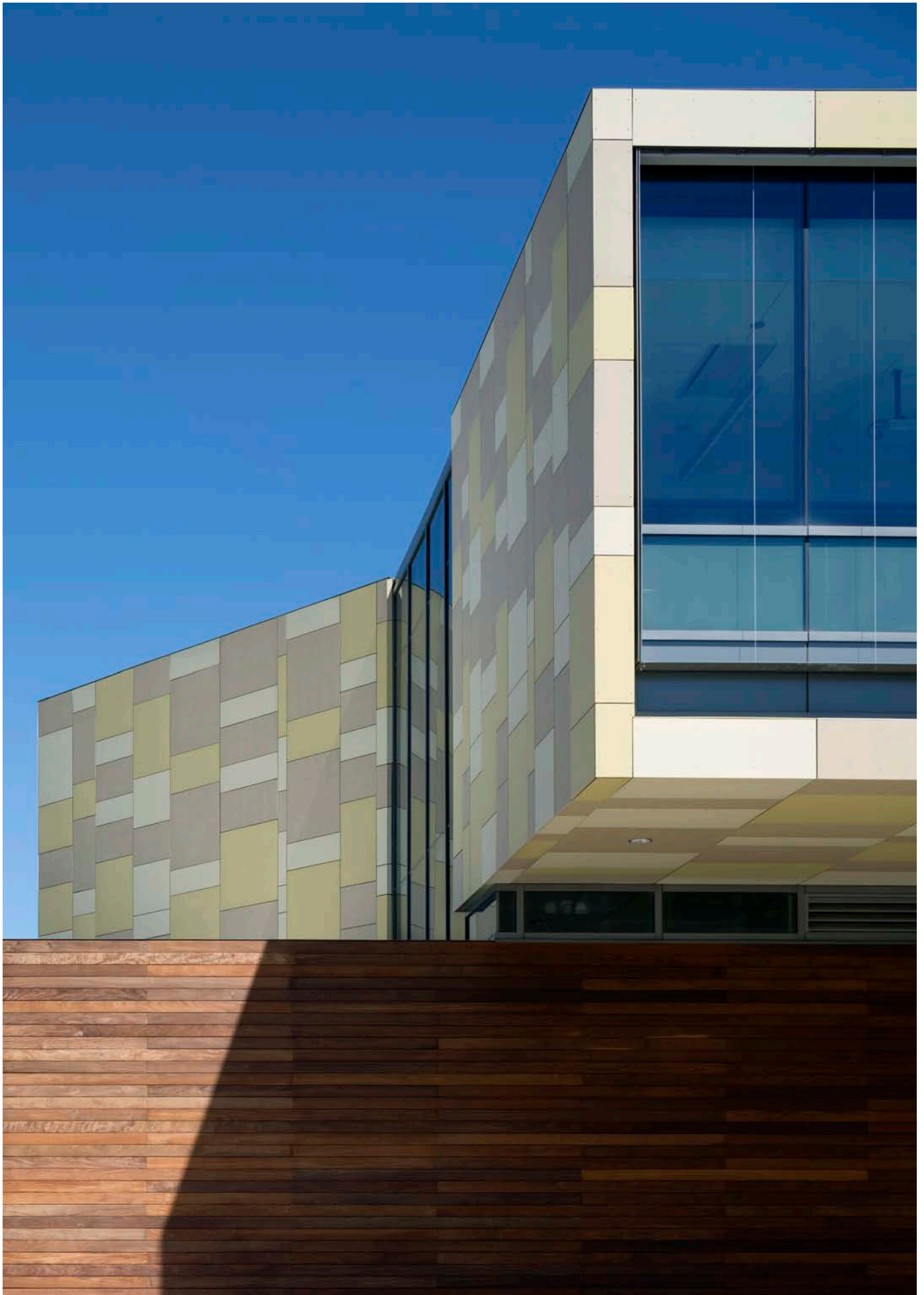


# Swisspearl® Façade Panels

## From surface areas to façade

No space without surfaces. No interior without an exterior. A façade is the defining element of every building. The first, lasting impression. It is the two- and three-dimensional expression of architectonic creativity and the leeway available for accentuation and differentiation. Additionally, the façade serves as the protective envelope. Its long service life ensures lasting comfort. Swisspearl® façades combine boundless diversity of design and long-lasting functional reliability, for the highest living standards.

Swisspearl® panels are installed in accordance with the ultimate technology of uninterrupted rear ventilation. This fully developed and proven cladding system effectively protects the building structure and with it the whole building from the elements for decades. The panels are rot-resistant, incombustible and virtually maintenance free.



USA West Campus Transportation Center, Iowa City

ARCH Neumann Monson Architects, Iowa City

PHOTO Cameron Campbell Integrated Studio, Ames





USA Joplin High School, Franklin Technology Center, Joplin

ARCH DLR Group, Overland Park and CGA Architects Joplin

PHOTO Alistair Tutton, Kansas City



---

Info

**Colors**

A wide range of more than 85 colors (pages 40-45)

**Installation**

The whole range from flat layer to lapped coverings, with face or concealed fastening

BOSNIA/HERZEGOVINA Importanne Center, Sarajevo

ARCH Studio non stop, Sarajevo

PHOTO Sandro Lendler, Zagreb [Croatia]

# SWISSPEARL large panels

## Freedom of design without limits

The large-format SWISSPEARL panels give façades what they need: a face, individuality, character, texture, color and, very importantly, a highly effective protective layer. SWISSPEARL allows an immense range of possibilities for the design of façades, with an extensive selection of surface options, various types of joints and fastenings, and panel formats that can be freely selected within the maximum useable size. For visible creativity and to meet the highest aesthetic requirements, in proven Swisspearl® quality.

Useable, finished panel sizes, after all four panel edges have been trimmed off



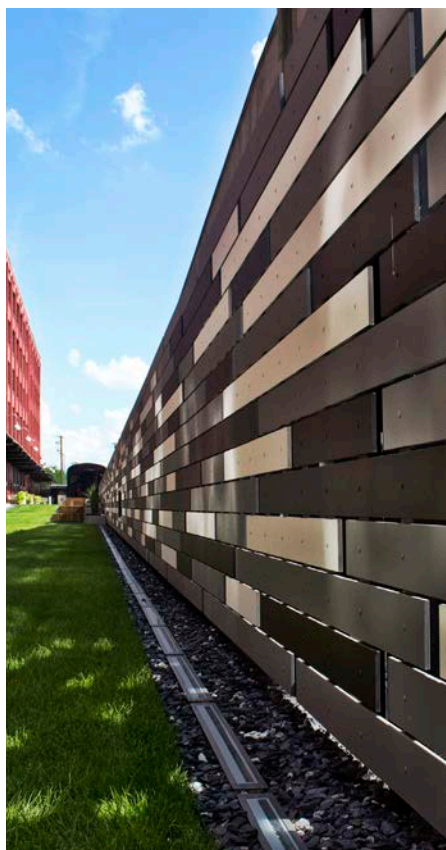
SWISSPEARL

Panel size	Thickness	Sub frame Metal	Sub frame Wood	CARAT	AVERA	REFLEX	NOBILIS	PLANEA
3040×1220 mm	12 mm	■	■	●	●	●	●	●
2500×1220 mm	12 mm	■	■	●	●	●	●	●
3040×1220 mm	8 mm	■	■	●	●	●	●	●
2500×1220 mm	8 mm	■	■	●	●	●	●	●
2000×1220 mm	8 mm	■	■				●	●
3040×920 mm	8 mm	■	■	●			●	●
2500×920 mm	8 mm	■	■	●			●	●

Panels with 920 mm width are only available in CARAT colors Agate, Black Opal, Coral, Crystal, Sapphire and Topaz and require a minimum order quantity of 500 panels.



SWITZERLAND Multi-family house, Winterthur  
ARCH OMG + Partner Architekten AG, Winterthur  
PHOTO Jürg Zimmermann, Zürich



---

Info

**Colors**

A wide range of more than 85 colors (pages 40-45)

**Installation**

Easy installation with open joints, panels attached by rivets or screws

USA Cummins Station, Nashville  
ARCH Smith Gee Studio, Nashville  
PHOTO Smith Gee Studio, Nashville



# LINEARIS slat panels

## Sustainable, elegant and light

LINEARIS are ready-made SWISSPEARL panel strips, for installing with open joints. Whether monochrome or multicolored, equal or varying format lengths, with continuous or offset joints – there is immense scope for different combinations. The low consumption of resources and energy for their manufacture, and their long working life, make LINEARIS the epitome of sustainable construction, like all Swisspearl® products.

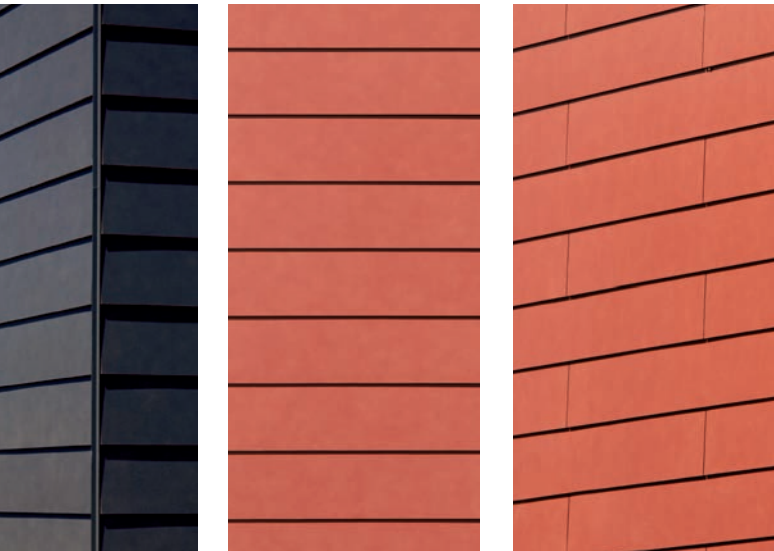


LINEARIS

Panel size	Thickness	Sub-frame Metal	Sub-frame Wood	CARAT	AVERA	REFLEX	NOBILIS	PLANEA
2500×300 mm	8 mm	■	■	●	●	●	●	●
2500×147 mm	8 mm	■	■	●	●	●	●	●
1500×300 mm	8 mm	■	■	●	●	●	●	●
1500×147 mm	8 mm	■	■	●	●	●	●	●



SWITZERLAND Multi-family house, Winterthur  
ARCH Höhn+Partner AG, Dübendorf  
PHOTO Jürg Zimmermann, Zürich



---

Info

### Colors

A wide range of more than 85 colors (pages 40-45)

### Planning and execution

The MODULA panels are mounted on wooden or metal sub-structures and installed as lapped coverings in accordance with the optimum system of the rear-ventilated façade according to the same principle as the large-format SWISSPEARL panels with open joints. Details for planning and execution see the MODULA Design and Installation Manual.

### Installation

Installation of the modules with continuous or offset vertical joints is possible.

# MODULA overlap panels

## Medium-size format for high-end architecture

The horizontal MODULA structure has a fine architectonic rhythm. The slim panels, available in two different lengths, are installed as lapped coverings and can be arranged both with continuous and with offset vertical joints. A large number of different surfaces and colors enable numerous additional design variants.

Whether monochrome or multicolored, equal or varying format lengths, with continuous or offset joints – MODULA provides immense scope for individual combinations.

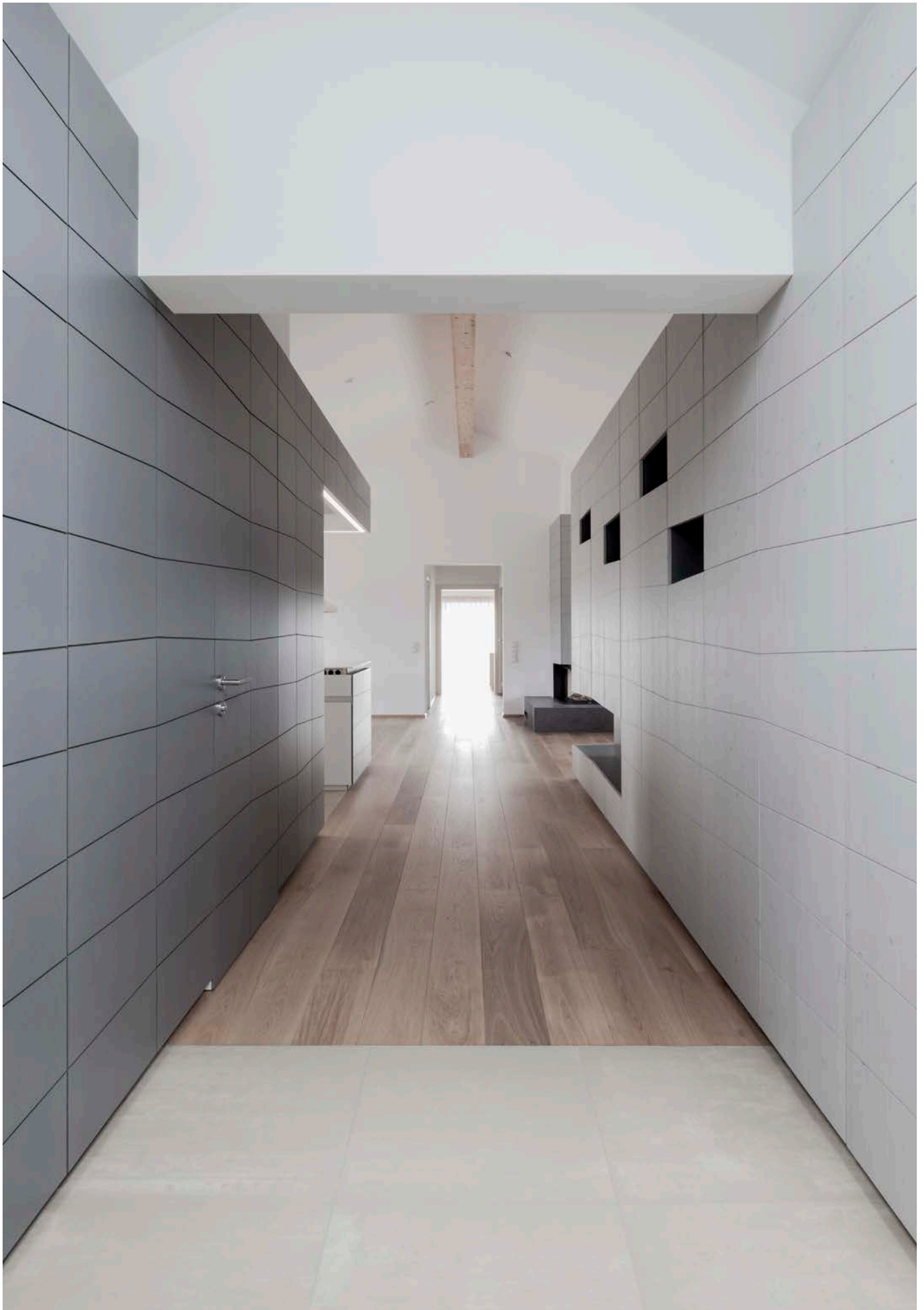
	Panel size	Thickness	Sub frame		CARAT	AVERA	REFLEX	NOBILIS	PLANEA
			Metal	Wood					
MODULA	2500×300 mm	8 mm	■	■	●	●	●	●	●
	1500×300 mm	8 mm	■	■	●	●	●	●	●













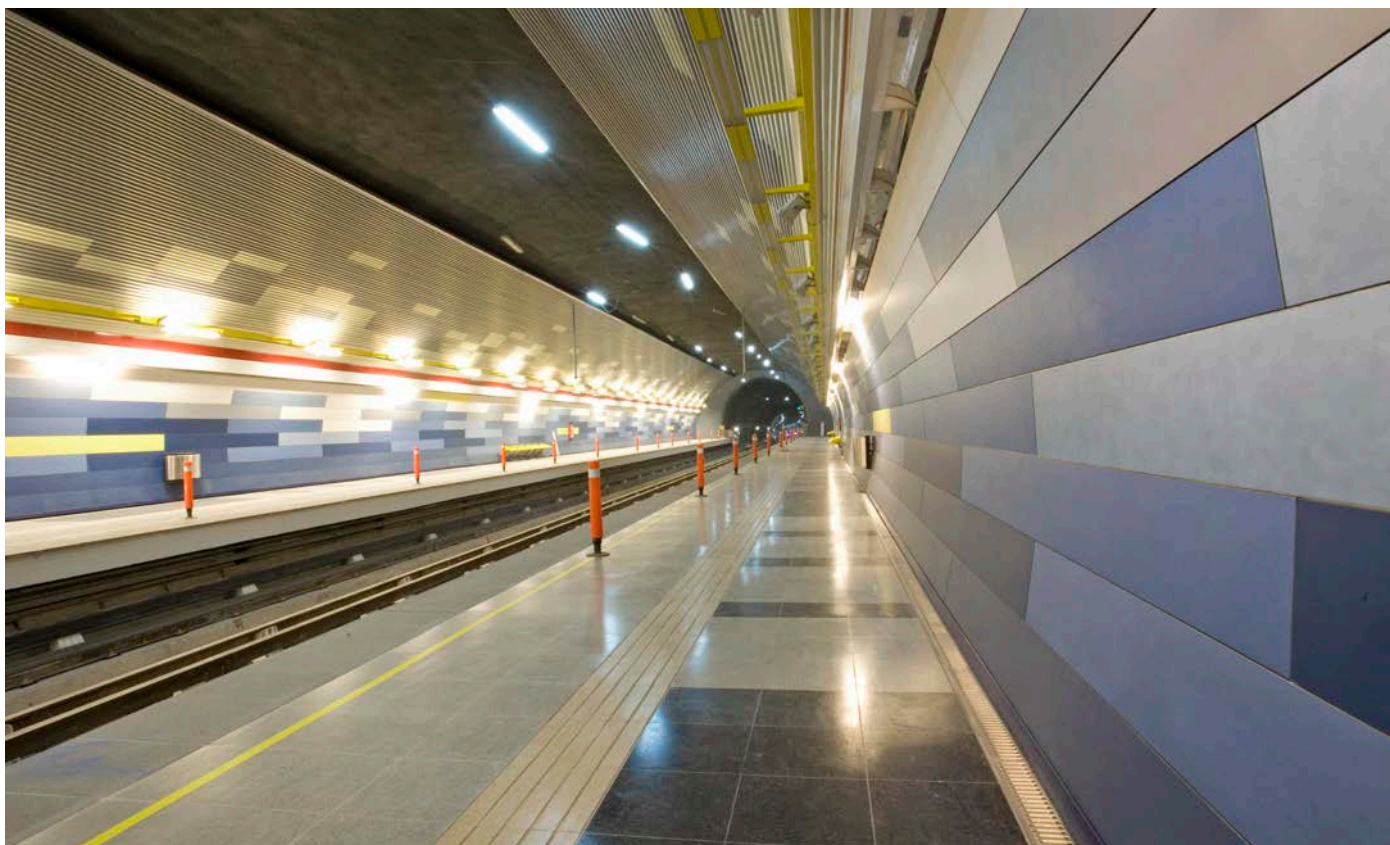
# Swisspearl® Interior design

## Moving from the outside to the interior

Whether they are private areas, living and working spaces, or public zones with many passersby, indoor space means living space. The many requirements that the human being has here extend from the aesthetic aspects to the acoustics, the durability, the surface feel, and the safety aspects.

Swisspearl® Interior design panels, with their unmistakable material characteristics and their technical properties, offer the widest range of design opportunities combined with the highest quality standards, for distinctive interior design.

Swisspearl® is the key for high spec interior spaces of universities, administration, offices, conference rooms, hotels and restaurants, shopping malls, airports, train stations as well as residences. The scope of application is literally unlimited.



CHILE Metro Station, Santiago de Chile

ARCH Burmeister Arquitectos Consultores SA, Santiago de Chile

PHOTO Cristian Barahona, Santiago de Chile



#### Info

#### Colors

A wide range of more than 85 colors (pages 40-45)

#### Installation

The whole range from flat layer to lapped coverings, with face or concealed fastening

AUSTRIA Penthouse, Pörschach

ARCH destilat, Vienna

PHOTO destilat, Vienna

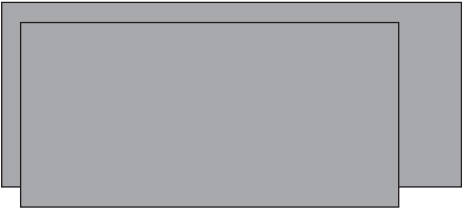
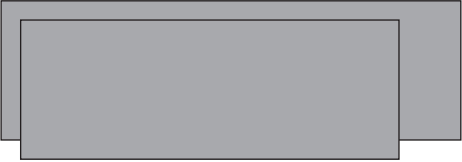
# SWISSPEARL INTERIOR

## Inspiring freedom of design

Whether it is for cladding interior walls or ceilings, SWISSPEARL INTERIOR lends a fascinating quality and atmosphere to the room that is being designed, in a surprising new way. The fiber cement material with its delicate surface texture and the carefully matched full-body color, lend the Swisspearl® panels an unmistakable uniqueness, with their pleasant natural appearance and surface feel. What is more, their beneficial physical properties mean that they are extremely tough, durable and fire-resistant, so they are long-lasting, reliable and problem-free.

Swisspearl® panels are also suitable to enhance room acoustics. Made of inert material, perforated Swisspearl® panels are sound-absorbent to approx. 10 decibels. Sound absorption coefficient can be improved by using sound absorbing mats.

Useable, finished panel sizes, after all four panel edges have been trimmed off

	Panel size	Thickness	Sub-frame Metal	Sub-frame Wood	CARAT	AGATE	REFLEX	NOBILIS	PLANA
 SWISSPEARL INTERIOR	3040×1220 mm	12 mm	■	■	●	●	●	●	●
	2500×1220 mm	12 mm	■	■	●	●	●	●	●
	3040×1220 mm	8 mm	■	■	●	●	●	●	●
	2500×1220 mm	8 mm	■	■	●	●	●	●	●
	2000×1220 mm	8 mm	■	■				●	●
	3040×920 mm	8 mm	■	■	●			●	●
	2500×920 mm	8 mm	■	■	●			●	●

Panels with 920 mm width are only available in CARAT colors Agate, Black Opal, Coral, Crystal, Sapphire and Topaz and require a minimum order quantity of 500 panels.









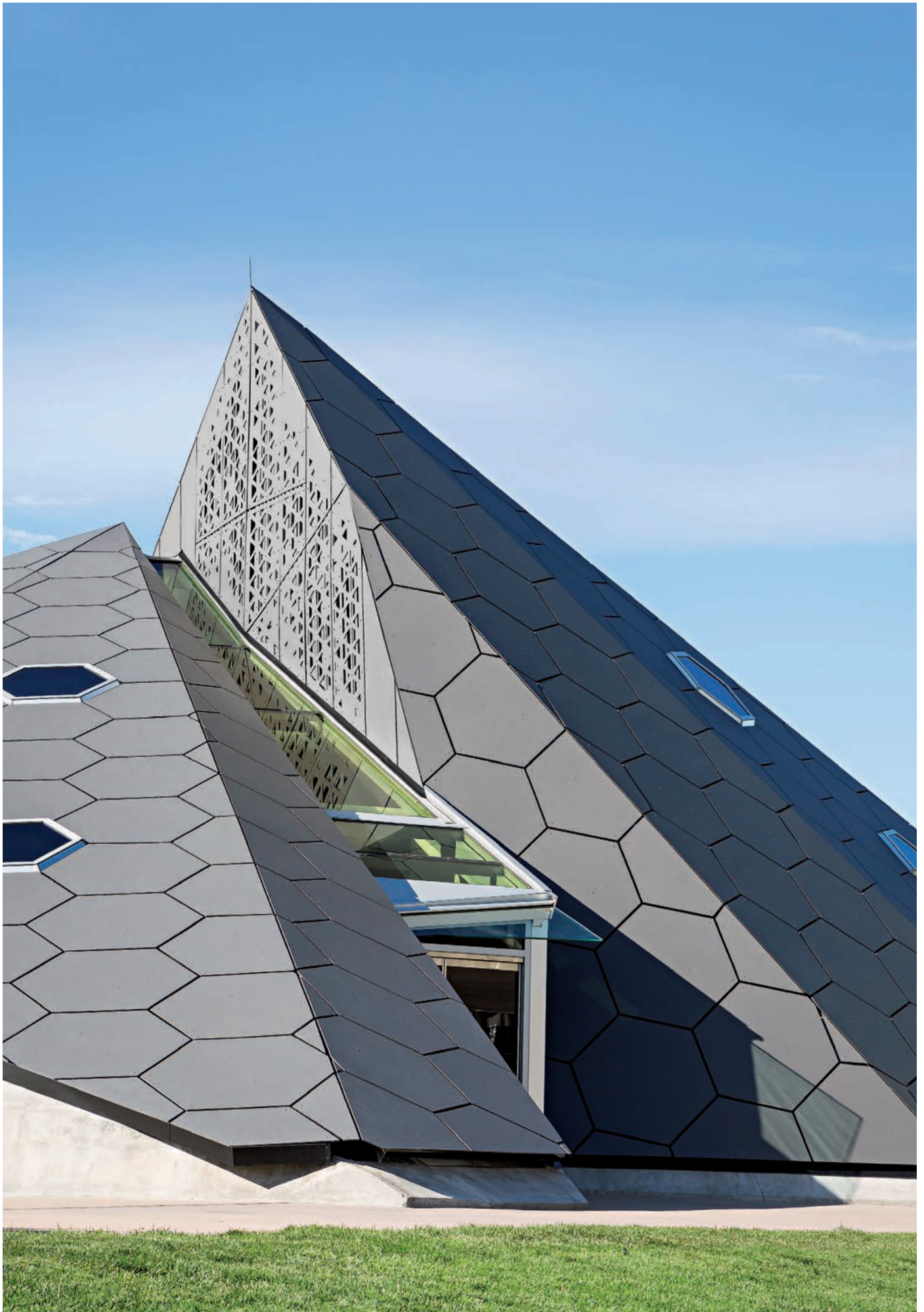
## Customized Panels

### Be creative

The designing possibilities offered by the wide range of finishes and colors may be complemented with special fabrication or surface treatments. These additional options allow an exclusive, special touch to be given to every high profile building.

The various Swisspearl® specialties rest on the integrally colored panel platform. Panels with perforations, engravings or other surface treatments are provided with an outstanding finish. They may be used individually or in combination with other Swisspearl® panels in same or different shade or with other materials.





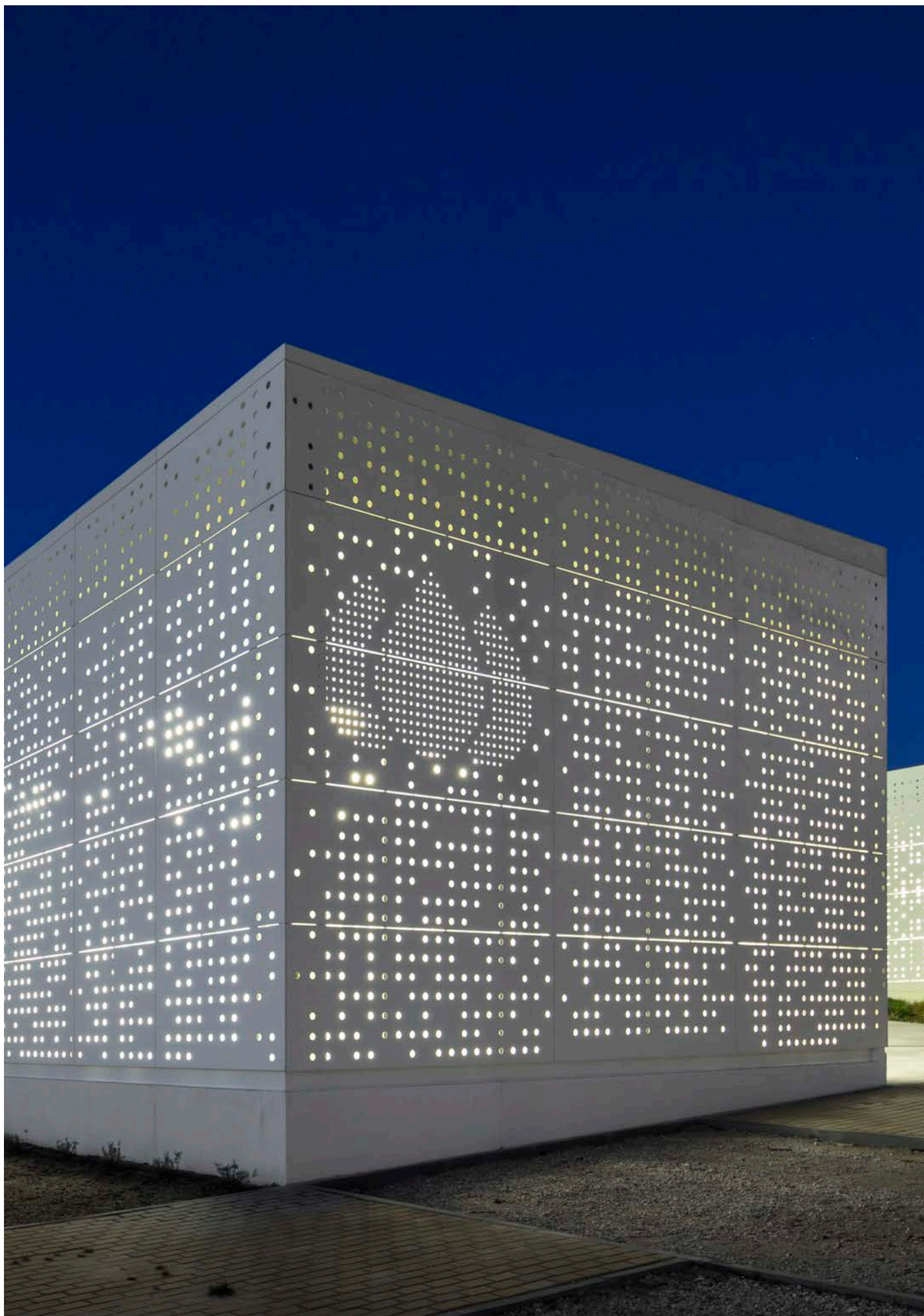


# Perforations

## Designing possibilities with functionality

Holes, slots and other shaped perforations allow the creation of unusual effects. Perforated panels may have a function (sliding shutters, lighting concepts, windcreens, separation, sound absorption, etc.) or be purely decorative. Each perforation project needs to be checked by our technical advisors. As a guideline, the surface of perforations may be up to 18%.

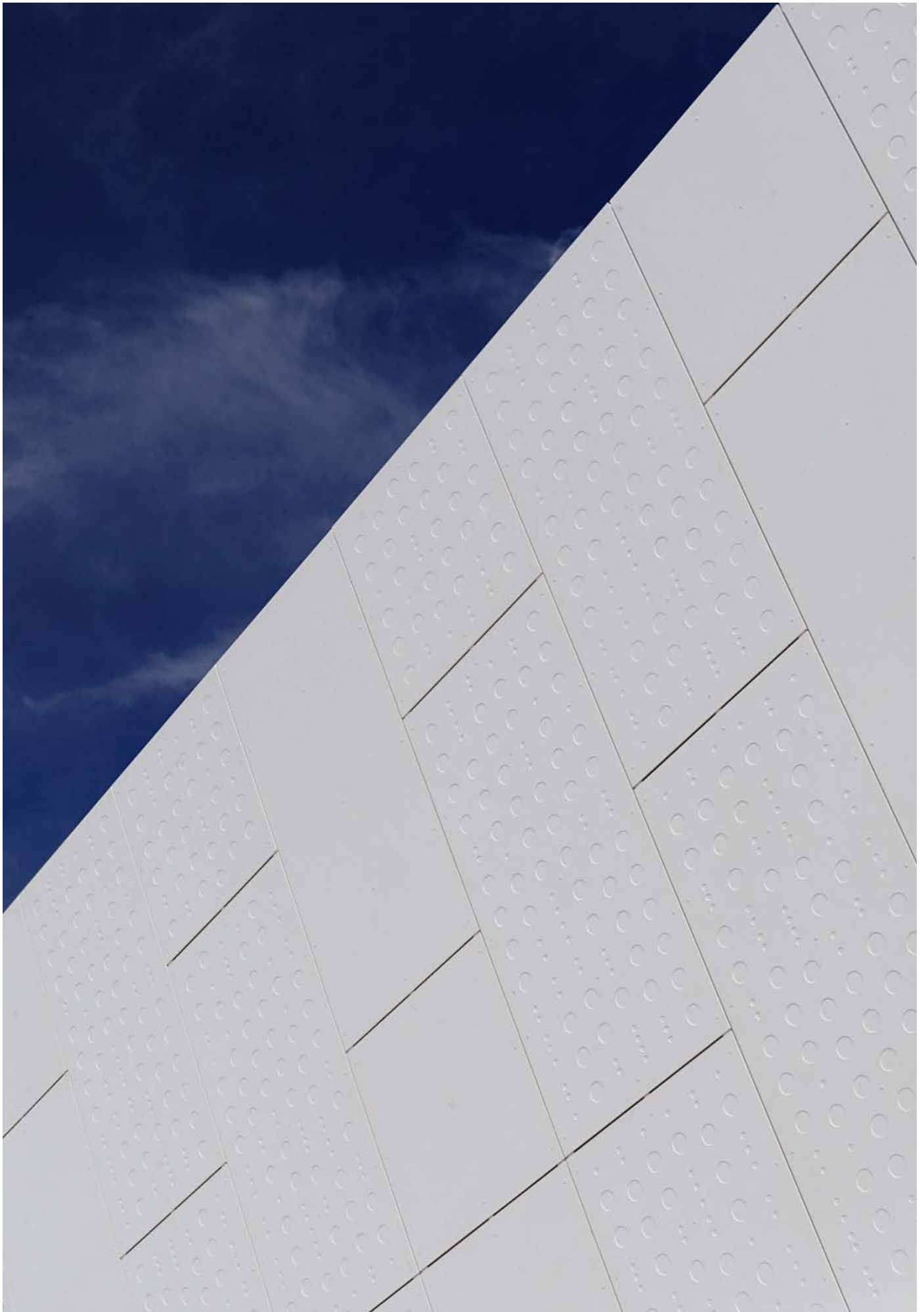
Perforated panels are not available in HR finish nor AVERA.



PORTUGAL Tagus Gas headquarter, Lisbon

ARCH Saraiva & Associados, Lisbon

PHOTO FG + SG Architectural Photography, Lisbon





# Engravings

## To impress

Geometric designs, unique custom patterns, company logo, etc., the creative possibilities are unlimited. Engravings may be within a panel, change from one panel to the other or run over several panels to create a bigger pattern. The structural feasibility of each intended pattern needs to be checked. As a guideline, the depth of engravings is 1.5 mm (panel 8 mm thickness) or 4.0 mm (panel 12 mm thickness). Please consult a Swisspearl® technical advisor or the Design and Installation Manual.

Engraved panels are not available in HR finish nor AVERA.



BRAZIL ITMS Telemedicina do Brasil, Sao Paulo

ARCH Mauricio Karam, Sao Paulo

PHOTO Mauricio Karam, Sao Paulo

## Panels coated on both sides

### Twice the look

Any panel may be finished on both sides. Typical applications are panels for balconies or balustrades (minimum thickness: 12 mm), partition walls visible on both sides, sliding shutters, etc.



CROATIA University of Rijeka

ARCH Hildegard Auf-Franic, Tin Sven Franic and Vanja Rister, Zagreb

PHOTO Sandro Lendler, Zagreb

# Sun shading elements

## Break the light

Additional customized treatment such as perforations is of course also possible for sun shading elements. With these functional and aesthetic elements heat buildup in sun-exposed rooms can be reduced, thus allowing significant reduction in energy costs for cooling needs.



SLOVENIA Bus Station, Velenje

ARCH Guzic Trplan Arhitekti d.o.o., Ljubljana

PHOTO Miran Kambic, Radovljica









SWITZERLAND Single-family house, Bottighofen

ARCH Schreck + Filz Architekten, Kreuzlingen

PHOTO Jürg Zimmermann, Zurich

# Swisspearl® Roof

## On the Rooftops

The roof is the crowning final touch to every building; the canopy under which the elements of an intelligent, well-proportioned overall design are all brought together. However, besides the aesthetic criteria it also has to meet the very highest demands of resistance against extreme weather. It must serve as protection against blazing sunlight, storms, rain, hail and snow. With a variety of forms, colors and great practical functions, Swisspearl® brings out the boundless diversity of designs, the enhancement and preservation of the value of buildings, at the same time protecting the living rooms and offices and the people in them.

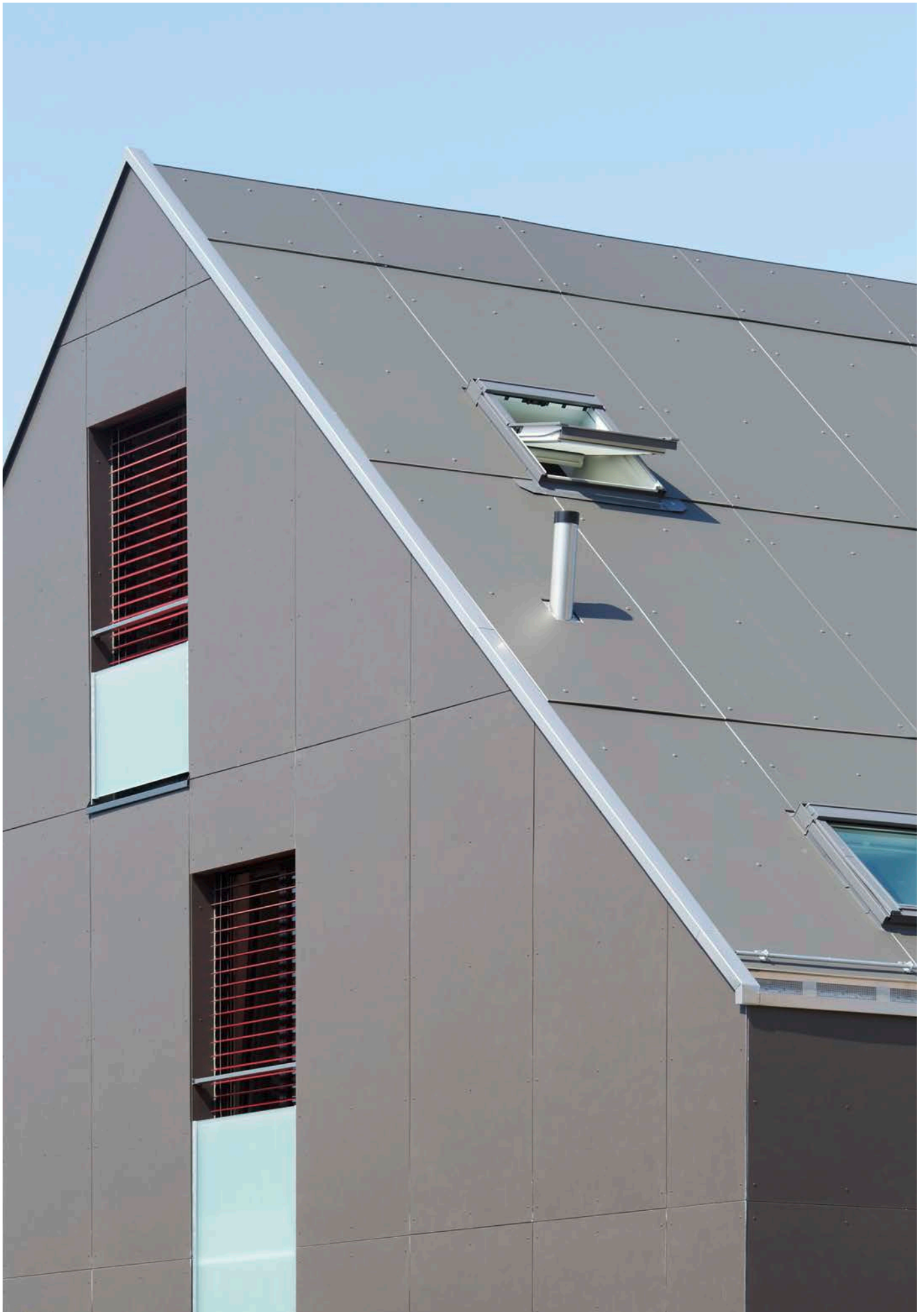




SWITZERLAND Single-family house, Küsnacht

ARCH Rossetti + Wyss Architekten AG, Zürich

PHOTO Jürg Zimmermann, Zürich



SWITZERLAND Multi-family house, Bachenbülach

ARCH zh architekten AG, Opfikon

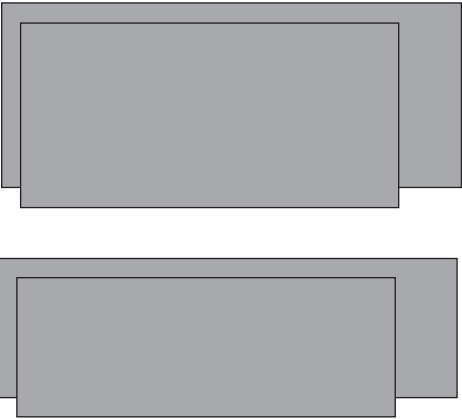
PHOTO Jürg Zimmermann, Zürich

# SWISSPEARL THE 5<sup>th</sup> FAÇADE

## A clear language to express architectonic visions

Leave the conventional behind and strike out new paths. Swisspearl® invites you to experiment with space, form and surfaces, and develop creative solutions, without compromising the functional reliability in any way. The large-format roof panels with their proven Swisspearl® quality will add character to roofs with a slope of just 6 degrees or more, and provide an exciting visual effect even when viewed from a distance.

Useable, finished panel sizes, after all four panel edges have been trimmed off

		Panel size	Thickness	CARAT R-COLOR
	SWISSPEARL THE 5 <sup>th</sup> FAÇADE	3040×1220 mm	8 mm	■
		2500×1220 mm	8 mm	■







ITALY Noverasco Shopping Center

ARCH One Works, Milan

PHOTO Meraner-Hauser Photostudio OHG, Eppan

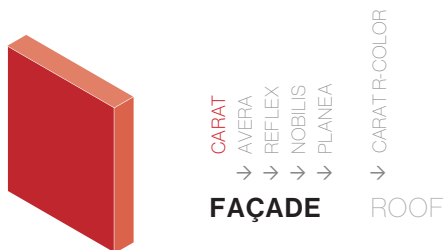
# Swisspearl® Color Families

## Uniqueness and Diversity

The various color families allow the unique character of the Swisspearl® panels to be expressed in an almost endless diversity. The carefully chosen full-body color and color finishes, each in their own way, emphasize the unmistakable aesthetics of the material, and combine material and color to form a single whole.







## CARAT

### CARAT

CARAT panels are integrally colored with a transparent or pigmented acrylic top finish shade in shade. The unique natural look and the timeless beauty of the monolithic material with its delicate vein texture provide an exciting and noble expression to every building.

### CARAT HR

This special surface treatment offers an increased scratch resistance and a higher UV resistance. Furthermore, most graffiti can be removed using acetone.

Generally the aspect resembles the CARAT finish, whereas HR panels have a slight sheen to the surface. CARAT and HR panels can be used on the same elevation, if possible with a separation between them.

### CARAT F-COLOR

Providing a slightly unsmooth surface, the thicker coating with opaque pigmentation of this acrylic finish allows vibrant colors. It also provides an increased protection against weathering and UV radiation. Available on request in all standard CARAT colors and as custom shades.

CARAT F-Color panels are appropriate to use for inclined surfaces.

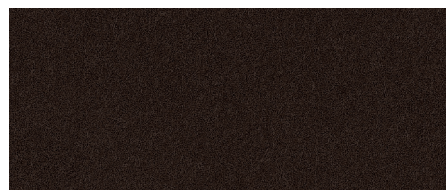
Please note: if colors Onyx or Amber are intended for an inclined surface, it is required to use R-Color panels. R-Color in Onyx and Amber (on a grey base sheet) are available on request.



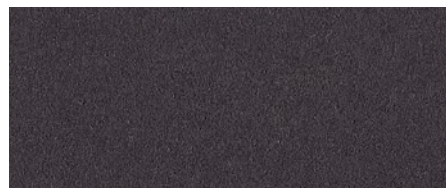
Black Opal 7020



Black Opal 7021



Black Opal 7024



Black Opal 7025



Coral 7030





Agate 7219

On a grey base sheet



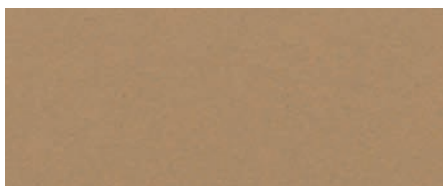
Jade 7050



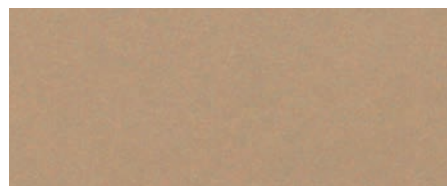
Jade 7052



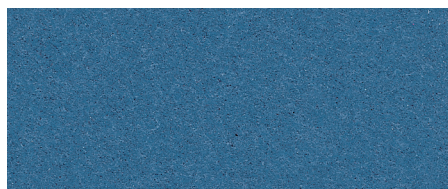
Sahara 7000



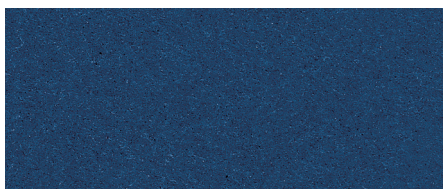
Sahara 7001



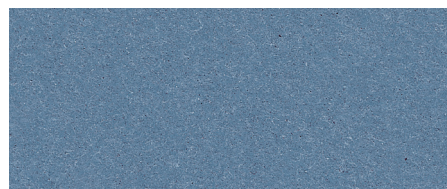
Sahara 7002



Azurite 7040



Azurite 7041



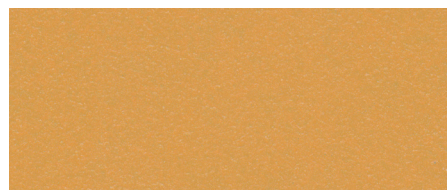
Azurite 7043



Topaz 7070



Topaz 7071



Topaz 7073



Amber 7080



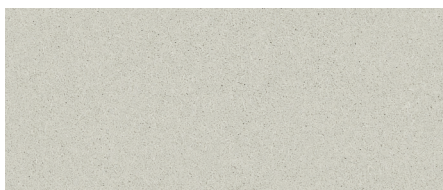
Amber 7081



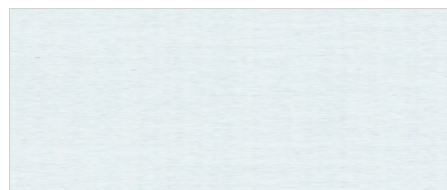
Amber 7082



Onyx 7090



Onyx 7091



Onyx 7099



Crystal 7010



Sapphire 7060



Sapphire 7061



Coral 7031

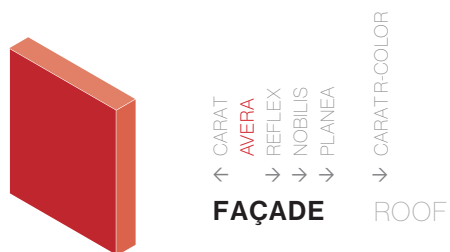


Coral 7032



Coral 7033





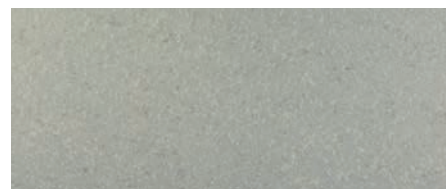
## AVERA

### AVERA

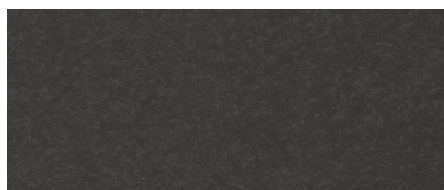
AVERA are solid-colored fiber cement panels with a vibrant texture never seen before. The unique look is characterized by the specifically coordinated dynamic manufacturing process. The resulting natural variation in color tonality and perspective even between the panels expressively emphasizes the authenticity of the material. AVERA gives a façade a unique vibrancy. A high-quality invisible coating provides the AVERA panels with years of protection from weather effects and lets the original look and texture shine through. The special coating also shows strong scratch resistance and offers lasting defense against most graffiti.



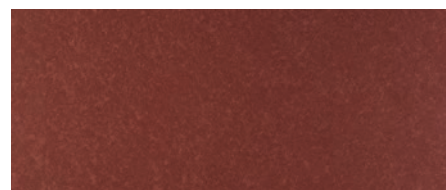
AV 000



AV 010



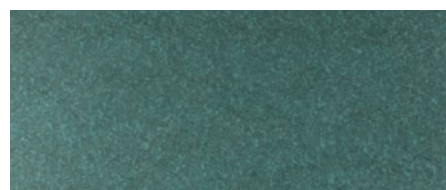
AV 020



AV 030



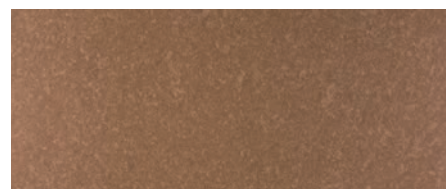
AV 040



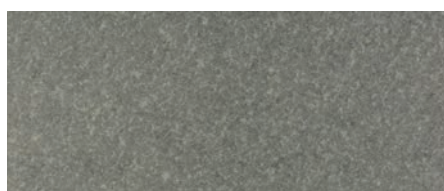
AV 050



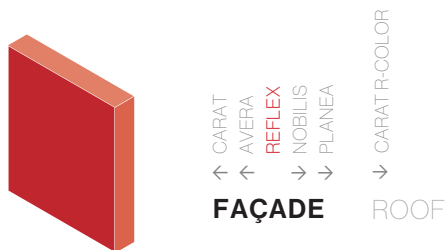
AV 060



AV 070



AV 100



## REFLEX

### REFLEX

These panels are directional, mostly integrally colored and have an iridescent surface coating which is purely acrylic. Changing lighting and angles of vision produce amazing nuances in color shades.

For cutting and installation manufacturing direction of sheets is to respect.



Silver 9000

On a grey base sheet

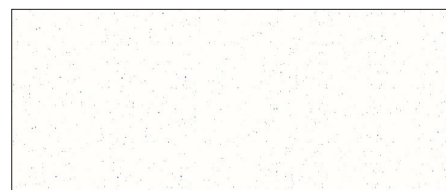


Platinum 9020

On a grey base sheet



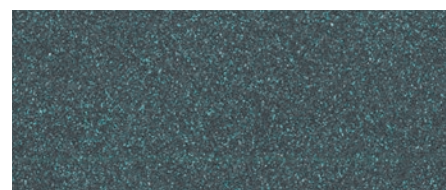
Champagne 9290



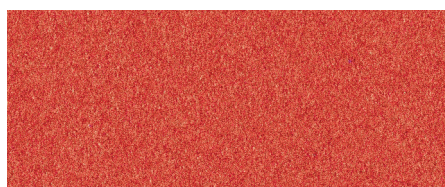
Satin White 9291



Black Velvet 9221



Dark Silver 9222



Sunset 9230



Crimson 9231



Blue Ice 9240



Cobalt Blue 9241



Green Lagon 9250



Autumn Leaves 9270



Mystic Brown 9271



Gold 9272





CARAT  
← AVERA  
← REFLEX  
← **NOBILIS**  
→ PLANEA

**FAÇADE**

→ CARATR-COLOR

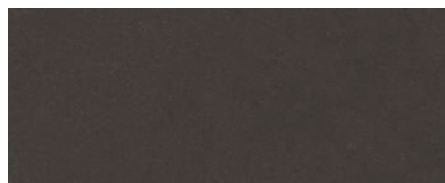
**ROOF**

## NOBILIS

### NOBILIS

The semi-translucent surface coating on a pure acrylic basis provides the classic fiber cement appeal with much visual depth to it.

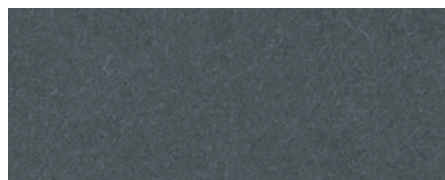
▲ also available with HR-Coating



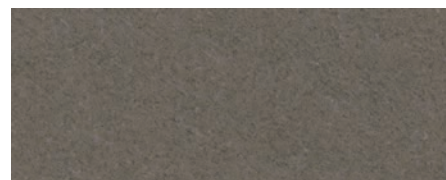
Black N 012



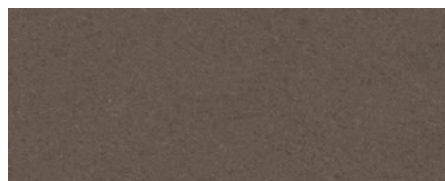
White N 112



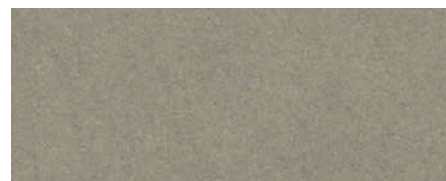
Grey N 211



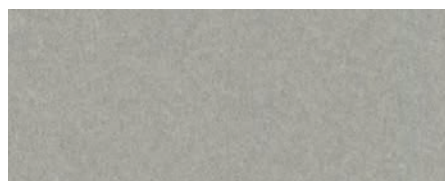
Grey N 212



Grey N 213



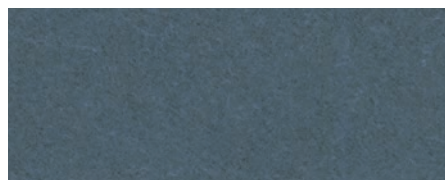
Grey N 214



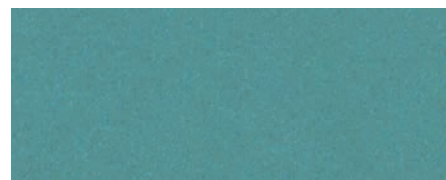
Grey N 215



Red N 312



Blue N 411



Blue N 412



Green N 511



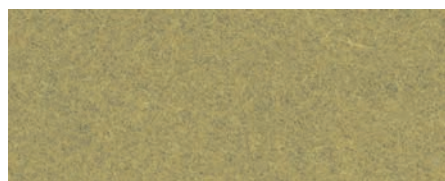
Green N 513



Green N 515



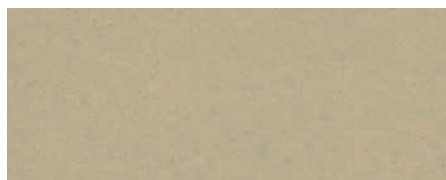
Yellow N 611



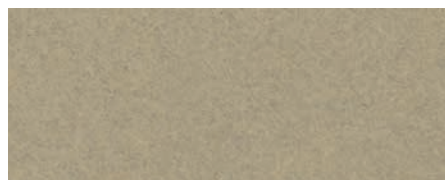
Yellow N 612



Orange N 711



Beige N 811

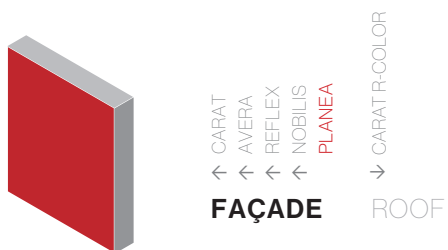


Beige N 813



Brown N 915

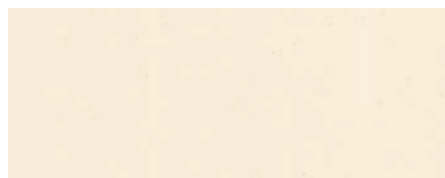




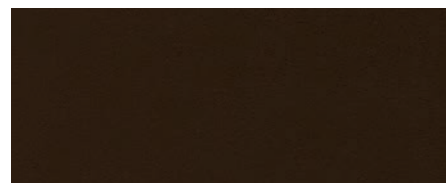
## PLANEA

### PLANEA

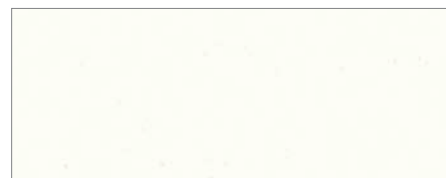
This opaque acrylic coating allows the creation of bright and intense colors.



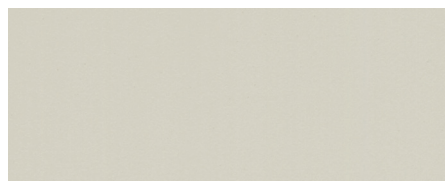
White P 111



Black P 011



White P 113



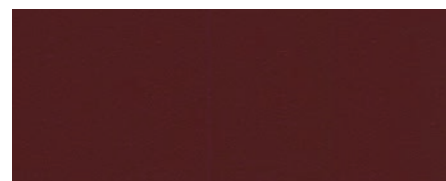
Grey P 216



Red P 313



Red P 314



Red P 315



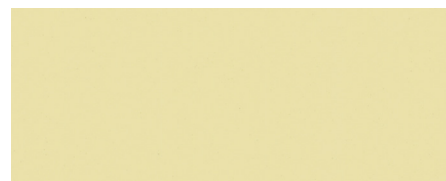
Blue P 413



Blue P 414



Yellow P 613



Yellow P 616



Yellow P 617



Beige P 812

## Customized colors

### Create your own color

You want to create your own color for the façade or the roof? No problem! Swisspearl® has an unmatched competence and know-how regarding special colors. Thousands of customized colors were supplied according to architects' specification.



HUNGARY Cultural Center Vertes Agorajat, Tatabánya

ARCH Planbau Kft., Tatabánya

PHOTO Szabo Bela, Ótteny



# Custom-tailored building envelopes

## Free Design

The need for individuality and expression in our society continues to grow. With our material, we are able to implement special and unique panels according to most of the individual customer's needs. For example three-dimensional building envelopes can be an option.

Special requests or designs? We are happy to assist you.



AUSTRIA Shopping center Spar, Alland

ARCH Mang Architekten, Furth-Palt

PHOTO Hertha Hurnaus, Wien





CARAT  
← AVERA  
← REFLEX  
← NOBILIS  
← PLANEA  
FAÇADE

CARAT R-COLOR

ROOF

Swisspearl® Roof colors

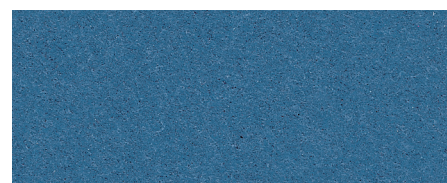
## CARAT R-COLOR

### CARAT R-COLOR

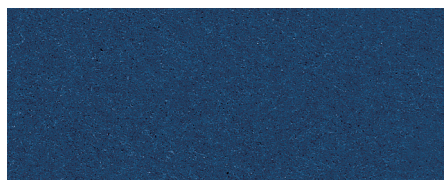
CARAT R-Color panels are integrally colored. The special coating with opaque pigmentation of this finish allows vibrant colors. It also provides an increased protection against weathering and UV radiation as well as a slightly textured surface.



Black Opal 7021



Azurite 7040 R



Azurite 7041 R



Jade 7050 R



Sapphire 7060 R



Sapphire 7061 R



Topaz 7070 R



Topaz 7071 R



Coral 7031 R



Coral 7032 R

# General information

## Product warranty

The products are manufactured to highest standards and under permanent quality control programs by third party testing facilities as well as by the factory's own laboratories.

In case that any delivered product should not reach its specified performance there will be a 10 year warranty covering the functional quality of panels and accessories. The warranty is granted on condition that the Design and Installation Manual has been fully complied with.

## Properties of the material

The printed colors may differ from the original shade of the color. To see the exact color, and when matching up colors on adjacent parts of a building, one must use the original panel samples.

The natural ingredients used in the fiber cement panels will to some extent determine the unique character of the material. The intensity and color tone may vary slightly depending on the production batch.

More details can be found at [www.swisspearl.com](http://www.swisspearl.com).









SLOVENIA Villa, Ljubljana

ARCH Point d.o.o, Ljubljana Sentvid

PHOTO Miran Kambic, Radovljica

## Authorized Distributor

**Swisspearl**  
CH-8867 Niederurnen

[www.swisspearl.com](http://www.swisspearl.com)  
[info@swisspearl.com](mailto:info@swisspearl.com)

Tel. +41 55 617 11 60

